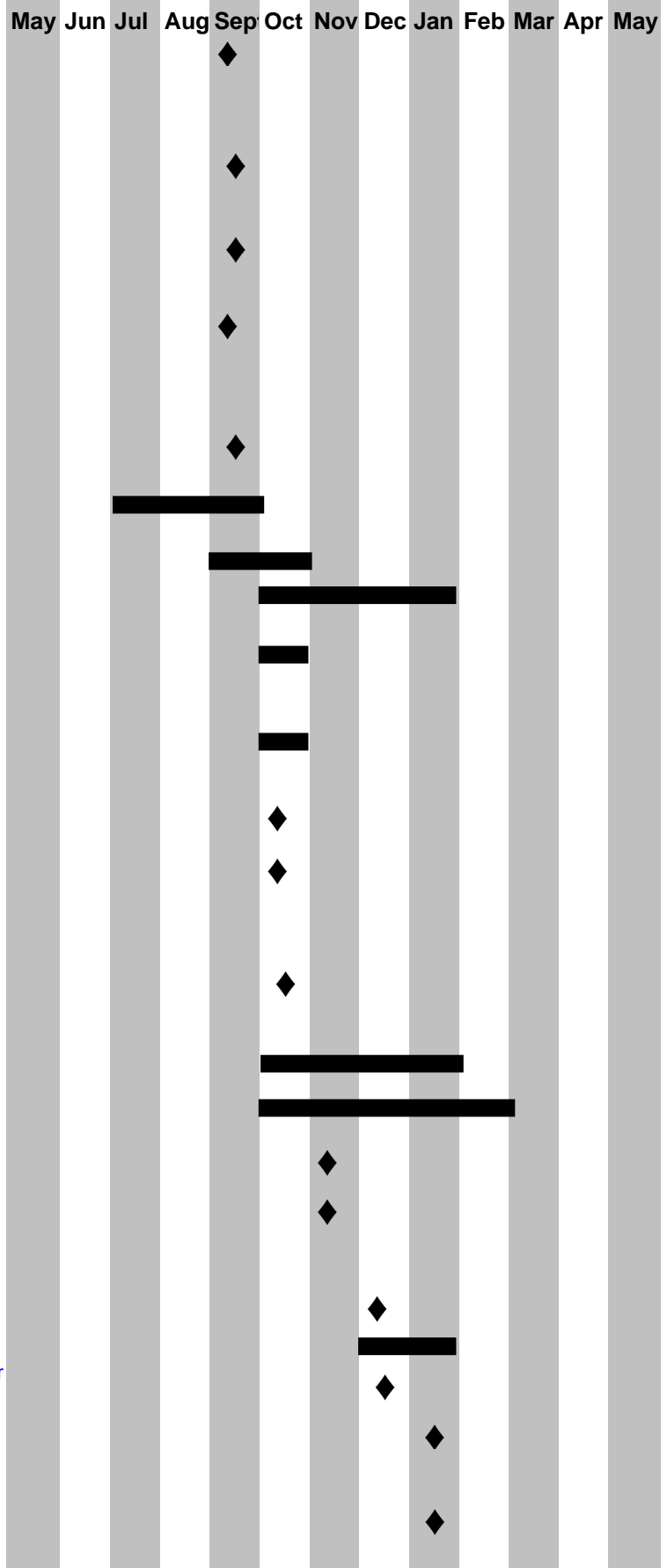


Class of 2010 M4 Timeline

	May	Jun	Jul	Aug	Sep	Oct	Nov	Dec	Jan	Feb	Mar	Apr	May
<input type="checkbox"/> Urology match information available, registration begins through AUA @ http://www.auanet.org	■												
<input type="checkbox"/> Investigate on-line sources for specialty and program information, requirements and deadlines	■												
<input type="checkbox"/> Review SFMatch site for general information about the early match process (Ophthalmology). Early match registration is available through the SFMatch site at http://www.SFMatch.org	■												
<input type="checkbox"/> Begin submitting application for USMLE Step 2 CS & CK. Recommend having Step 2 CS completed by end of Feb.; Step 2 CK by the end of March. Register early!	■												
<input type="checkbox"/> Put final touches on CV and personal statement	■												
<input type="checkbox"/> Begin requesting residency application information and brochures directly from hospitals through FREIDA at https://freida.ama-assn.org/Freida/user/viewProgramSearch.do	■												
<input type="checkbox"/> Gather CAS materials (LoRs, transcript, personal statement, application, CV)		■											
<input type="checkbox"/> ERAS 2010 manuals available for download. Visit the ERAS website at http://www.aamc.org/audienceeras.htm		■											
<input type="checkbox"/> Begin residency program applications Note: Each program has specific deadlines for applications. Students are responsible for finding out these deadlines.			■										
<input type="checkbox"/> Early July ERAS tokens distributed via e-mail. Please see http://www.feinberg.northwestern.edu/AWOME/Current_Students/Residency/index.html for more information. Start entering data into ERAS.				◆									
<input type="checkbox"/> July 15th Session from 5:00-6:00pm (following PPS) for all early match students to discuss timeline/application process. Hughes Auditorium				◆									
<input type="checkbox"/> July 28th and 29th First opportunity to have senior portrait taken. Tarry 2-714				◆									
<input type="checkbox"/> August 3rd MSPE worksheet due to j-langland@northwestern.edu					◆								
<input type="checkbox"/> August 12th. Session from 5:00-6:00 pm (following PPS) on an overview of the application process. Hughes Auditorium						◆							
<input type="checkbox"/> August 15. NRMP registration and applicant use guide for the NRMP available at http://www.nrmp.org Note: students going through early match who need to secure a PGY1 position will need to register with the NRMP							◆						
<input type="checkbox"/> August 26th and 27th Second opportunity to have senior portrait taken. Tarry 2-714								◆					



- Sept.1.** ERAS post office opened for transmitting applications. Programs can begin to download your applications.
- Sept. 2nd** CAS target date for Ophtho. Note: This is not a deadline. It is the target date to have your application submitted for central distribution.
- Sept.15** Target date for ERAS applicants to have entered all MyERAS information.
- Sept 16th** Workshop on interviewing for early match students. Session from 5:00-6:00pm. (After PPS) All students are invited to attend. Note: this workshop will be repeated on Oct. 14th. Hughes Auditorium
- Sept 23rd** Last chance to have senior portrait taken. Tarry 2-714
- Track LoRs through ERAS Applicant Document Tracking System (ADTS)
- Early match students schedule mock interviews. (optional)**
Schedule mock interviews (through departments) - regular match students (optional)
- Students review draft of MSPE (online) and review transcript
- Get professional photo to Diane Hill to be scanned in to ERAS (photo is optional)
- Oct. 1st.** LoRs due to Diane Hill to be loaded into ERAS. You will assign these letters as you apply.
- October 14th.** Interviewing for residency workshop (repeat of Sept. 16th session) held after PPS IV. Session from 5:00-6:00pm Hughes Auditorium
- October 16th.** Transcripts will be loaded into ERAS. (if needed earlier than Oct. 16th contact Diane Hill)
- Fill out petition for graduation form available on the graduation webpage
- Interview at residency programs
- November 1.** MSPE release date for ERAS and CAS
- November 30th. 11:59 PM** Deadline to register for NRMP. May register after this date but will pay \$50 late penalty fee.
- Military Match Results released
- Early match students go over RoL with advisor**
- January 4th** Deadline for submitting rank order lists for AUA (urology).
- January 7th.** Deadline for submitting rank order lists for Ophthalmology
- Jan 13th.** Session on rank order lists and matching strategies. Session from 5:00-6:00pm after PPS IV. Hughes Auditorium

- January 14th.** Match results for Ophtho faxed to AWOME and e-mailed to applicants.
- Jan 15th.** Begin to enter rank order lists for NRMP. You will need AAMC ID and password to access the site.
- January 25th.** Match results for Urology faxed to AWOME and e-mail applicants.
- February.** Complete USMLE Step 2 CS.
- February** Schedule individual loan review meeting with Cynthia Gonzalez
- Feb. 24th** NRMP Rank Order lists must be **certified** by 9:00 PM EST. NRMP staff will be available to answer questions during the final hours.
- March** Required Loan Exit Session and Optional Mortgage Information Session (Dates TBD)
- March 15th** Unmatched information posted on the web at 11:00 AM CST. Individual counseling will be available for all unmatched students.
- March 18th Match Day!**
- Send thank you note to your advisor and letter writers letting them know where you matched and how much you appreciate their support.
- Complete the AAMC Graduation Questionnaire (details to follow)
- May 19th** Graduates Sign-out . Details to follow.
- May 20th GRADUATION DAY!!**

