



Northwestern University Feinberg School of Medicine

The Role of IPHAM: One Year Anniversary

Rowland Chang, MD MPH
Director, Institute for Public Health
and Medicine

Jane L. Holl, MD MPH
Director, Center for Education
in Health Sciences



Northwestern University Feinberg School of Medicine

Institute for
Public Health and Medicine



Northwestern University Feinberg School of Medicine

Center for Education
in Health Sciences

Introduction



- ❖ Welcome to our first session of FY14!
- ❖ Center for Education in Health Sciences
 - New IPHAM Center
 - Assumes responsibility for coordinating the seminar series
 - Provides opportunities for all IPHAM Centers

Every Thursday, 12-1pm
CME accredited
Lunch provided

Contacts

Eimear Curran

e-curran@northwestern.edu

Emily Stambaugh

emily.stambaugh@northwestern.edu

Agenda



<u>Item</u>	<u>Speaker</u>	<u>Time</u>
Introduction	Jane Holl	12.00 – 12.05pm
IPHAM – Overview	Rowland Chang	12.05 – 12.15pm
Synopsis of 9 Centers within IPHAM	Rowland Chang	12.15 – 12.35pm
Center for Education Update and Role of IPHAM Seminar Series	Jane Holl	12.35 – 12.45pm
Questions & Answers	All	12.45 – 1.00pm

IPHAM Overview

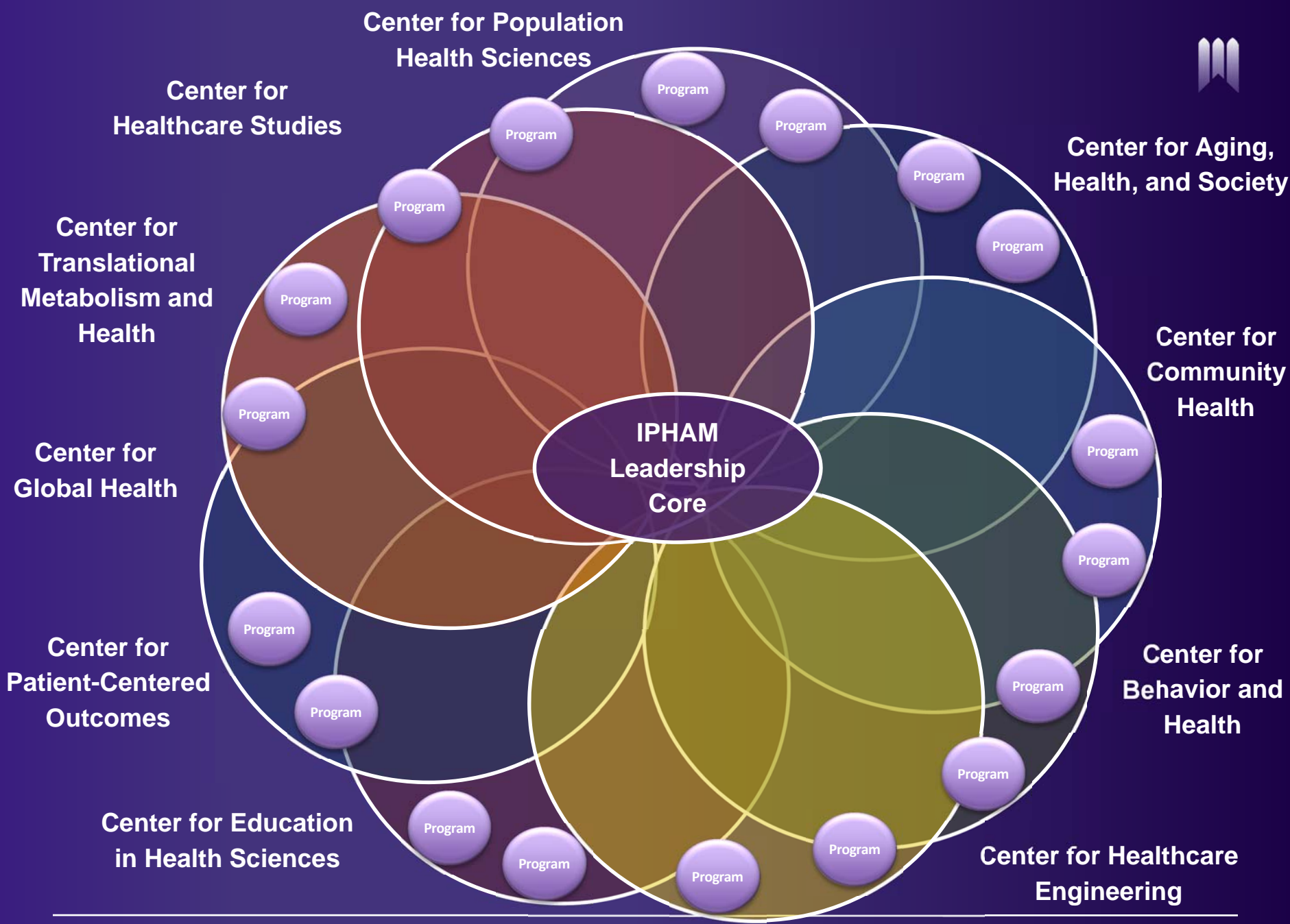


- ❖ **The Institute for Public Health and Medicine (IPHAM) is the nexus for all public health activities at the Feinberg School of Medicine (FSM) and Northwestern University (NU).**
 - ❖ **The goal of the Institute is to accelerate innovation at the interface of medicine and public health and achieve measurable improvements in health for patients and populations.**
 - **Comprised of thematic Centers supporting interdisciplinary research Programs**
 - **Aligns and integrates resources and expertise across departments, schools, and partners**
-

IPHAM Overview



- ❖ **IPHAM centers are interdisciplinary and interactive, providing a home for innovative research, education, and service at the interface of public health and medicine.**
 - **Aligns population, outcomes, and health services research, education, career development,, and community outreach programs across FSM, NU, and its partners.**
 - **Founded in FY13 – One year in existence!**
 - **Currently, has 29 affiliated staff and over 300 faculty members across NU.**
-



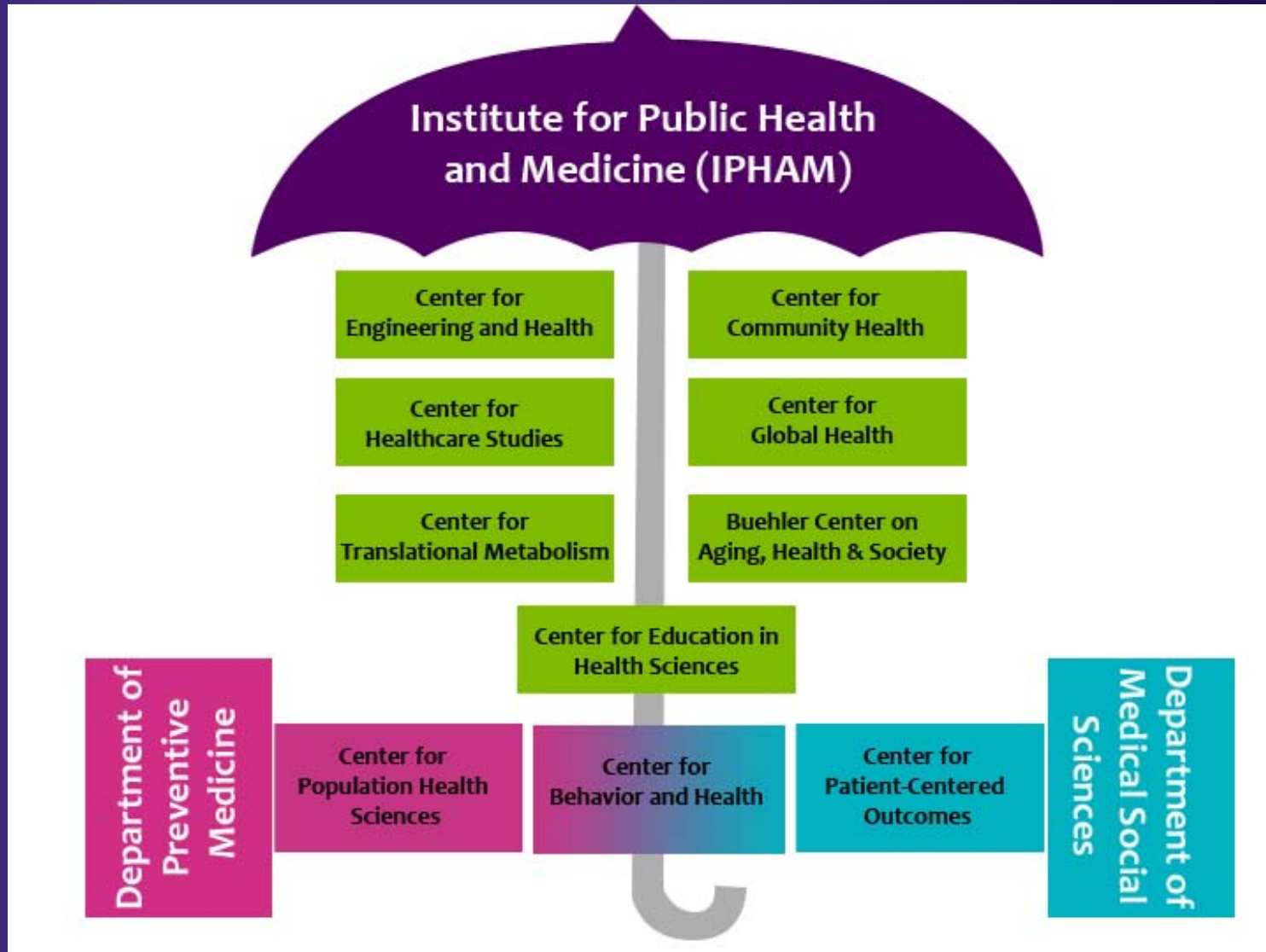
IPHAM Leadership



Director	Rowland Chang, MD MPH
Deputy Director	David Baker, MD MPH
Dean for Research	Rex Chisholm, PhD
NUCATS Director	Donald Lloyd Jones, MD PhD
Center Directors	
Administrator	Kirsten Yehl, MLIS

- ❖ **Establishes vision, mission, goals, and strategy for IPHAM**
 - ❖ **Provides ongoing source of centralized leadership and coordination for the Institute Centers, Cores, and Programs**
 - ❖ **Sets policy regarding allocation of resources and funding**
 - ❖ **Facilitates the creation of collaborative teams that make NU-FSM more competitive for disease and discipline-specific federal and non federal grants/contracts**
-

IPHAM Organizational Structure





IPHAM Overview

Key Achievements FY 13

- ❖ **Solidified the structure and established standard processes and operating models**
 - ❖ **Recruited Faculty: 12 faculty recruited from outside NU**
 - ❖ **Expanded research portfolio: Over \$87 million in new awards for IPHAM faculty**
-

Agenda



<u>Item</u>	<u>Speaker</u>	<u>Time</u>
Introduction	Jane Holl	12.00 – 12.05pm
IPHAM – Overview	Rowland Chang	12.05 – 12.15pm
Synopsis of 9 Centers within IPHAM	Rowland Chang	12.15 – 12.35pm
Center for Education Update and Role of IPHAM Seminar Series	Jane Holl	12.35 – 12.45pm
Questions & Answers	All	12.45 – 1.00pm



Center for Behavior and Health

Director: Bonnie Spring, PhD
Administrator: Julianna Lee



Northwestern University Feinberg School of Medicine

Institute for
Public Health and Medicine



Northwestern University Feinberg School of Medicine

Center for Education
in Health Sciences



CBH Research Goals:

- ❖ Understand determinants that cause the onset and maintenance of health risk behaviors
- ❖ Understand biobehavioral mechanisms whereby unhealthy behaviors “get under the skin” to affect health
- ❖ Develop, optimize, and evaluate interventions that promote healthy lifestyle behaviors

Four signatures of CBH interventions:

Apply optimization techniques drawn from engineering

Incorporate novel technologies to overcome access barriers & reduce cost

Integrate human interventionists (e.g. peers, health professionals)

Engage social networks and systems



Achievements / Events

- ❖ **Significant ongoing work with the Lurie Comprehensive Cancer Center**
 - **National Cancer Institute training grant**
 - **Faculty recruitment**
 - **Strategic work on cancer prevention behavioral science program**

 - ❖ **Wednesday Brown Bag Sessions**
 - **Internal studio workshop to foster collaboration across centers and schools**
 - **Good turnout so far this year – all are welcome!**
-



Buehler Center on Aging, Health and Society

Director: Linda Emanuel, MD/PhD
Administrator: Michelle Grana



Buehler Center Mission



The mission of the Buehler Center on Aging, Health & Society is to improve the quality of life and quality of care for older adults, the terminally ill, and other vulnerable populations through education, research, and clinical care.

Research agenda focuses on areas in palliative medicine, patient safety, and whole-person care (addressing psychological, social and community care needs).



Achievements / Events

- ❖ Education and implementation in Palliative and End-of-life Care Program (EPEC®)
 - ❖ Patient Safety Education and implementation Program (PSEP™)
 - ❖ Recent Awards:
 - *Evaluation of Chicago as an Age-Friendly City* (PI: Johnson)
 - *PSEP – Canada Evaluative Research Plan* (PI: Emanuel)
 - ❖ New Faculty

Rebecca Johnson, PhD, MSc	Amy Eisenstein, PhD, MA
David Lu, MD, MBE	Mitesh Rao, MD, MHS
 - ❖ October 21, 2013
18th Annual James E. & Bonnie L. Eckenhoff Lecture and the John & Gwen Smart Symposium
-



Center for Community Health

Director: Ron Ackermann, MD/MPH

Administrator: Justin Henderson



 Northwestern University Feinberg School of Medicine
Institute for
Public Health and Medicine

 Northwestern University Feinberg School of Medicine
Center for Education
in Health Sciences

About CCH



Mission:

The Northwestern University Center for Community Health (CCH) cultivates and catalyzes engagement of academic and community partners to improve the health and healthcare of communities.

Goals:

- ❖ Stimulate growth in the breadth and depth of community engagement in research.
 - ❖ Fuel institutional culture that values and supports community engagement in research, service, & education.
 - ❖ Aid in the dissemination & adoption of evidence-based policies and best practices.
-

CCH Organization



Alliance for Research in Chicagoland Communities (ARCC): Fosters collaborative research between community organizations and NU faculty.

Practice-Based Research Program (PBR): Fosters collaborative research between community-based providers and NU faculty, through 2 practice-based research networks:

- ❖ **REACH**: 17 clinical sites, including private practices and FQHCs with >160 member physicians
- ❖ **Pediatric Practice Research Group (PPRG)**: regional network founded as partnership of Ann & Robert H. Lurie Children's Hospital and >50 pediatric practices



Achievements / Events

- ❖ **CCH services support patient and stakeholder participation in research, through:**
 - **Partnership brokering for community-academic research teams**
 - **Team training & faculty development**
 - **Funding opportunities (including seed grants)**
 - **Research proposal review and support**
 - **Consultations for study design and implementation**

 - ❖ **Hired New CCH Associate Director: Darius Tandon, PhD**
 - **Expert in community-based participatory research (CBPR)**
 - **Editor of the journal *Progress in Community Health Partnerships: Research, Education, and Action***
-



Center for Engineering and Health

Director: Sanjay Mehrotra, PhD
Deputy Director: David Mohr, PhD
Administrator: Chrissy Kelly



Mission



To develop a nationally recognized center of innovation and talent in the field of mobile health technologies; engineering; and analytics for affordable, equitable and state of the art health delivery.

Research spans areas of healthcare policy, operations, prevention and delivery using engineering approaches, including: systems engineering, optimization, sensors and devices, advanced analytics, computer sciences and decision sciences



Center for Engineering and Health

Research Framework



Healthcare
Logistics

Health
Communication and
Interventions

Emergency
Response
Management

Global &
Community Health
Delivery

Operations

Health Policy

Staffing

Security &
Privacy
Management

Outcomes
Predictive
Modeling

Provider-
Computer
Interaction

Operations
Research

Databases

Sensor
Networks

Optimization

Big Data
Mining

Signal
Processing

Decision
Analysis

**Dry Lab
Engineering**

Visual
Analytics

Computer
Simulation

Machine
Learning

Circuits

HP Computing

Control

Health Equity

Real-time
interventions

Failure Mode
Analysis

Care Process
Analysis

Clinical

Trial Design

Therapy Delivery

Prevention

Achievements / Events



- ❖ *Models and methods for robust and dynamic decision making in mass participation event planning* (PI: Smilowitz, Mehrotra, Chiampas, Chan)
 - ❖ *Epidermal electronics for healthcare monitoring* (PI: Huang, Paller)
 - ❖ **Health Policy and Systems: National Disparity in Transplant: NSF and R36 Funded IEMS PhD Student(s)**
 - ❖ **Operations and Safety – Staffing: NSF Funded IEMS Student; also helping NMH in different ways**
 - ❖ **Prevention - Predictive Modeling:**
 - Lifetime CVD risk assessments (D. Lloyd Jones)
 - NSF Fellowship funded IEMS PhD Student
 - Readmissions in ED – currently unfunded, jump started through course project
 - Medium term sudden cardiac death risk assessment (jump started through course projects)
 - ❖ **Delivery: CBITS - Depression and the Purple mHealth Infrastructure** (Mohr)
-



Center for Global Health

Director: Robert Murphy, MD
Administrator: Dan Young



CGH Mission



The mission of the Center for Global Health is to promote health equity issues on Northwestern University campuses and build upon the knowledge base in the field of global health through translational research and interdisciplinary education initiatives in both the U.S. and globally.

Collaborative Research and Engagement

- ❖ **Research Agenda** aims to implement programs in low and middle income countries to strengthen infrastructure and optimize care for life-threatening conditions (HIV/AIDS, Tuberculosis, malaria, cancer, chronic diseases)
 - ❖ **Global Health Education at Feinberg**
 - ❖ **Access to Health Program** (with NU Law School)
-

Achievements / Events



- ❖ **Medical Education Partnership Initiative in Nigeria (R24) PI: Robert Murphy**
 - ❖ **Improving Neurologic Outcome Measurement for International Research (R25) PI: Ann Ragin**
 - ❖ **Multidisciplinary NeuroAIDS Research Training to Improve HIV Outcomes (D43) PI: Babafemi Taiwo**
 - ❖ **AAMC Graduation Survey cites that from 2010 - 2012 45% of FSM students participated in global health activity during medical school compared to 30% nationwide.**
 - ❖ **Global Health Day at Feinberg: Tomorrow, Sept 13, student posters in Method Atrium, 3-5pm**
 - ❖ **World Polio Day, Oct 24, Rotary International**
-



Center for Patient-Centered Outcomes

Director: David Cella, PhD
Administrator: Peter Connor



 Northwestern University Feinberg School of Medicine
Institute for
Public Health and Medicine

 Northwestern University Feinberg School of Medicine
Center for Education
in Health Sciences

CPCO Mission



The Center for Patient Centered Outcomes (CPCO) provides a bridge and an incubator for investigators and clinician-scientists across FSM and the University, whose research and interests focus on integration of health outcomes that incorporate the centrality and perspective of the patient.

Primary Goals:

- 1. Serve as an interdisciplinary incubator for patient centered outcomes research at FSM and across the University**
 - 2. Promote scientific discourse and training in patient centered outcomes research.**
-



Achievements / Events

- ❖ **Feinberg PCORI Initiative: presented two IPHAM Wednesday Workshop series on PCORI funding opportunities**
 - ❖ **Development of research resources to streamline application for PCORI Funding Announcements**
 - ❖ ***NM-PRO core***
 - ❖ **New faculty: Ryne Estabrook, PhD**
-



Center for Population Health Sciences

Director: Philip Greenland, MD
Administrator: Julianna Lee



About CPHS



The Center for Population Health Sciences includes epidemiologists, biostatisticians, and biomedical informaticians. The Center's main research is focused on identifying risk factors for the occurrence of disease and prognostic factors that alter the outcomes of disease.



Center Mission:

- ❖ To improve prevention and treatment strategies for diseases that have a major impact on population health
 - ❖ Integrates genomic, proteomic, metabolomic and novel phenotypic data into electronic health records to advance prevention science and improve use of diagnostic tests, therapies, and counseling to improve the outcomes, safety, and efficiency of care delivery
-



Achievements / Events

- ❖ **Multi-Ethnic Study of Autoimmunity and Cardiovascular Disease (PI: Darcy Majka)**
- ❖ **International Population Study on Macronutrients and BP – INTERMAP (PIs: Stamler, Van Horn)**
- ❖ **Drug Abuse, Incarceration and Health Disparities in HIV/AIDS: A Longitudinal Study (PI: Teplin)**

CPHS Strategic Goals:

- ❖ **Recruitment of high quality faculty**
 - ❖ **Expanded collaboration with the Chicago Department of Public Health**
 - ❖ **Program Development**
-



Center for Healthcare Studies

Director: Jane Holl, MD MPH
Administrator: Amy Kitzman



CHS Mission



To generate impactful research about the delivery, equity, safety and quality, efficiency, and effectiveness of healthcare in order to inform and shape healthcare policy, enhance healthcare practice, and improve the health of populations.



Achievements / Events



❖ Research

- National Children's Study (Holl and Gershon)
- Evaluating Aligning Forces for Quality (McHugh)

❖ New Programs

- Program in Childhood Allergy (Gupta)
- Program in Surgical Outcomes (Bilimoria)

❖ New Faculty and collaborations:

- Dustin French, PhD (Ophthalmology)
 - Karl Bilimoria, MS MS (Surgery)
 - Andrew Gawron, MD PhD (GI-Medicine)
 - Stephanie Shintani-Smith, MD MS (Otolaryngology)
 - Scott Dresden, MD MS (Emergency Medicine)
 - Elizabeth Alpern, MD MPH (Emergency Medicine –Pediatrics)
-



Center for Translational Metabolism and Health

Director: Myles Wolf, MD
Administrator: Chrissy Kelly



 Northwestern University Feinberg School of Medicine
Institute for
Public Health and Medicine

 Northwestern University Feinberg School of Medicine
Center for Education
in Health Sciences

About CTMH



- ❖ Launched September 1, 2013
- ❖ Director: Myles Wolf, MD, Margaret Gray Morton
Professor of Medicine

Mission

- ❖ Unite FSM scientists from multiple disciplines to develop an innovative, world-class program of translational biomedical research and research training focused on the *impact of nutrition and metabolism on health and disease*.
 - ❖ Inquiry will span across molecular biology, animal models, therapeutic target discovery, physiological patient-oriented investigation, epidemiology, genetics, clinical trials, health disparities, health policy, and health services research
-

Agenda



<u>Item</u>	<u>Speaker</u>	<u>Time</u>
Introduction	Jane Holl	12.00 – 12.05pm
IPHAM – Overview	Rowland Chang	12.05 – 12.15pm
Synopsis of 9 Centers within IPHAM	Rowland Chang	12.15 – 12.35pm
Center for Education Update and Role of IPHAM Seminar Series	Jane Holl	12.35 – 12.45pm
Questions & Answers	All	12.45 – 1.00pm



Center for Education in Health Sciences

Director: Jane Holl, MD MPH
Administrator: Eimear Curran





CEHS Mission

Bring together the existing innovative and high quality Health Sciences education and training programs at Feinberg to:

- ❖ **Expand opportunities for students and trainees**
- ❖ **Enhance educational content and program formats**
- ❖ **Provide a forum for coordination of program administration and sharing of resources**
- ❖ **Elevate the reputation and recognition of FSM as a destination for novel, rigorous, and relevant graduate education and training in the Health Sciences**



Overview of Programs



❖ Doctorate Degree Program

- Health Sciences Integrated PhD Program (HSIP)



❖ Master Degree Programs

- MS in Clinical Investigation (MSCI)
 - MS in Healthcare Quality and Patient Safety (MS HQPS)
 - MS in Health Services and Outcomes Research (MS HSOR)
 - MS in Epidemiology and Biostatistics (MSEB)
 - Master of Public Health (MPH)
-



Overview of Programs

❖ Certificate Programs

- Certificate in Healthcare Quality and Patient Safety
- Certificate in Health Services and Outcomes Research – Methodology
- Certificate in Health Services and Outcomes Research - Contemporary Issues

❖ Pre Doctorate Training

- AHRQ T-32 National Services Research Award

❖ Post Doctorate Training

- AHRQ T-32 National Services Research Award
 - NIDRR: Two Advanced Rehabilitation Research Training (AART) Awards
 - NIDDK: T-32 National Services Research Award
 - FSM Departments
-



Goals

- ❖ **Transition all existing master's level and certificate education programs into the Center of Education in Health Sciences**
 - ❖ **Review current programmatic activities; standardize process and systems; and achieve optimal administrative efficiency**
 - ❖ **Build the infrastructure to educate and train the *next generation* of top tier students in Health Sciences**
-

Tactics



- ❖ **Identify opportunities for administrative efficiencies in the area of outreach and marketing; admissions; financial management; branding and curriculum review:**
 - **Tuition structure:**
 - ❑ **Standardized rates across all programs**
 - ❑ **NU Fellows and residents: \$3,200/credit capped at \$16,000/year**
 - **Course Director stipend: 3 rates depending on professional grade**
 - **Standardize the admission and course evaluation processes**
 - **Review all MS programs with the goal of eliminating duplicative courses while assuring that all requirements are met**
 - **Adopt strategic branding, marketing, and public relations strategies**
-

Innovation



- ❖ **Adopt *hybrid* model for some programs,**
 - **Executive model: Intensive, short, in-person sessions**
 - **Synchronous and asynchronous online sessions**
 - ❑ **“Flipped Learning” approach**
 - **Pilot : Ethics course in Winter 2014**
 - ❖ **Expand recruitment, particularly nationally and internationally**
 - ❖ **Key goals:**
 - **Increase the total number of students**
 - **Employ cutting-edge educational approaches**
 - **Contribute to an environment of collaborative research**
-

Key Achievements



- ❖ **Implemented an organizational structure to optimize the strengths of each program by centralizing and streamlining duplicative tasks and use of resources**
 - ❖ **Launched the Health Sciences Integrated PhD Program (HSIP):**
 - **Year 1, 2012: 2 Students**
 - **Year 2, 2013: 4 Students**
 - ❖ **Successfully collaborated with the University of Chicago on AHRQ pre-doctoral and post-doctoral T32 training awards**
 - ❖ **Launched the IPHAM Seminar Series**
-



Immediate FY14 Plans

- ❖ **Deploy standard financial model** (standard tuition and course director stipends)

 - ❖ **Pilot and evaluate *hybrid* model of the HSOR Ethics Course**
 - **Capture milestones**
 - **Create an issues and lessons learned log**

 - ❖ **Expand the HSIP program to include two additional tracks**

 - ❖ **Optimize Center of Education administrative activities**
-



IPHAM Seminar Series

- ❖ CHES will be coordinating the IPHAM Seminar Series.
- ❖ Goal is to promote the IPHAM brand and mission and discover new opportunities for collaboration.
- ❖ Now includes the entire IPHAM Community, with each Center hosting at least two seminars each year.

**Every Thursday from 12pm-1pm
Baldwin Auditorium**

IPHAM Seminar Series



❖ Seminar Series Committee:

➤ Liaison appointed from each Center

- ❑ Will assist in identifying and inviting speakers
- ❑ Attend Committee meeting 3-4 times per year to review Seminar Series content and select speakers and topics.

❖ First Seminar Series Committee meeting in September, then quarterly.

❖ Opportunities and support for outside guest speakers

❖ New Faculty speaking this Fall:

- Daniel K. Mroczek, PhD
 - S. Darius Tandon, PhD
-

IPHAM Seminar Series



❖ CME accredited – 1 hour per seminar

❖ Lunch provided!

❖ Interested in participating – Contact:

Eimear Curran e-curran@northwestern.edu

Emily Stambaugh emily.stambaugh@northwestern.edu

IPHAM Seminar Series



❖ How to keep up to date!

1. Website

- Visit feinberg.northwestern.edu/ipham
- Go to “About Us”, then “IPHAM Seminar Series”

2. Plan it Purple: planitpurple.northwestern.edu

- Search keyword “IPHAM”

3. Sign up for **IPHAM and Seminar announcements**:

- Go to “About Us”, then “Contact Us” on IPHAM site
 - Weekly IPHAM newsletter + Monthly Seminar Mailing
-

Some Upcoming Speakers



- ❖ Daniel Mroczek, PhD (NU)
 - ❖ Sofia Garcia, PhD (NU)
 - ❖ Suzette Oyeku, MD, MPH, FAAP (Montefiore Medical Center)
 - ❖ David Baker, MD, MPH (NU)
 - ❖ S. Darius Tandon, PhD (NU – new faculty)
 - ❖ William Grobman, MD, MPH (NU)
 - ❖ Matthew O'Brien, MD, MSc (Temple University)
 - ❖ Myles Wolf , MD (NU - new faculty)
 - ❖ Sanjay Saint MD, MPH (University of Michigan)
 - ❖ Bechara Choucair, MD, MS (Chicago Dept. of Public Health)
 - ❖ Walter Bockting, PhD (Columbia University)
 - ❖ Laura Kubzansky, PhD MPH (Harvard)
 - ❖ David Figlio, PhD (NU – Institute for Policy Research)
 - ❖ Fellows presenting Capstone Research Projects (NU and UC)
-



Hollister Lecture 2013: December 10th

“Decision making in medical care, public health practice, and health policy”

**Harvey V. Fineberg, MD PhD
President, Institute of Medicine**

Hosted by Rowland Chang, MD MPH

In Closing...



❖ IPHAM focus FY14

- Continue to support collaborative enrichment opportunities especially in the areas of Communication, Health Information Technology, Policy and Disparities
 - Continue to develop core resources accessible to members and partners across Northwestern Medicine and Northwestern University
 - Develop and utilize current communication strategies to ensure IPHAM research receives national attention and has the opportunity to impact health policy
-

Questions & Answers

