

Home to Alliance for Research in Chicagoland Communities (ARCC) and the Northwestern Primary Care Practice-Based Research Program (NP3)



CCH Can Help You:

Current resources and services focus primarily on research:

- Partnership brokering & development
- [Workshops, seminars & team training](#)
- [Funding opportunities](#)
- [Consultations, proposal review & support](#)
- [Patient, Clinician & Stakeholder Engagement](#)

To learn more about the Center for Community Health, please visit our [website](#) or contact us at: cch-consult@northwestern.edu.

CCH Important News & Dates:

- [Enlace Chicago is hiring a Senior Manager of Community Health](#)
- 8/11 APHA Webinar: [Reborn Not Reformed: Re-Imagining Policing for the Public's Health](#)
- [Third Coast CFAR Community Collaborative Awards](#)

CCH Resources

- [ARCC Resource Directory](#)
- [August Resources and Opportunities](#)
- [Request CCH Consultation Support](#)

Receive our Newsletter!



FSM Advisory group on Further Strengthening our Community Engagement

In response to requests from a number of medical student groups and others at [Northwestern University's Feinberg School of Medicine](#), earlier this summer, [Dean Eric Neilson](#) formed four advisory groups related to different aspects of the school's [commitment to anti-racism](#). CCH is proud to serve on the advisory group focused on community engagement. This group is co-led by [IPHAM](#) Director [Ron Ackermann](#) and [CHET](#) Director [Melissa Simon](#) and other members include CCH Co-Directors [Namratha Kandula](#) and [Darius Tandon](#), [ARCC](#) Director [Jen Brown](#), [ARCC Steering Committee](#) Member and [Seed Grantee](#) Melvin Thompson from [Endeleo Institute](#) and former [ARCC Steering Committee](#) Member and [Seed Grantee](#) Juana Ballesteros from [Illinois Department of Public Health](#), and a number of CCH and [ARCC](#) academic partners. This group is charged with discussing how to improve how community is centered in all aspects of the Feinberg School of Medicine to help transform FSM to an antiracist institution and will submit a set of recommendations to Dean Neilson by the end of this summer. Issues being discussed include governance/decision-making, research/scholarship, education/training, admissions, hiring, promotion/retention, patient care delivery, advocacy, and communication practices. The advisory group is working to recommend specific actions that can be taken by the Dean of the school of medicine regarding how communities should be represented and involved in steering how the medical school can adopt and implement anti-racist policies and practices and how the work of the medical school can be organized to have the greatest possible impact on achieving racial justice and race equity in communities.

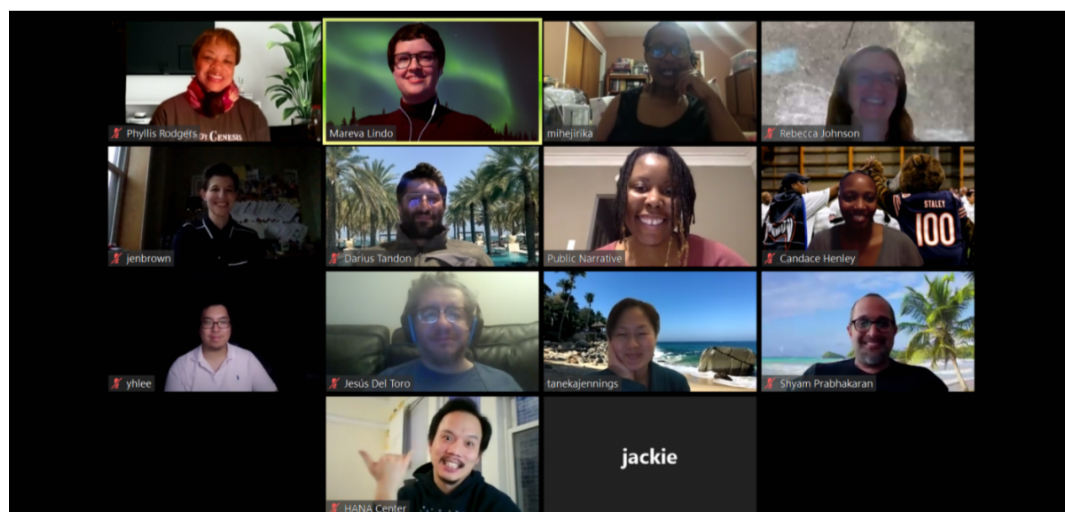
If you are interested in hearing more about the process or sharing your own suggestions or ideas, please contact CCH@northwestern.edu.



Continuing the Chicago Community, Media & Research Partnership during COVID-19

Just a couple weeks before Chicago's stay-at-home order began, [Public Narrative](#) shared an [update on their blog](#) introducing the members of their partnership with the [Alliance for Research in Chicagoland Communities \(ARCC\)](#). Since they began their work in September of 2019, the question they set out to explore has become more urgent than ever: How can we make health research more equitably accessible to populations and communities experiencing health disparities?

In late March and April, as the COVID-19 pandemic began in Chicago, [Public Narrative](#) reached out to their community and ethnic media partners, patient and community partners, and [PCORI](#)-funded health research partners to check in. [Click here](#) to read what they each shared about how the pandemic had impacted them thus far, how communities were coping, and what it might mean for their work.



Stakeholder-Academic Resource Panels (ShARPs) Update

One way that the [Center for Community Health \(CCH\)](#) is helping translate research findings into practice more quickly is through [Stakeholder-Academic Resource Panels \(ShARPs\)](#).

Upcoming Session Opportunity:

A team from Northwestern University and Alliance Chicago are working to explore youth hypertension (HTN) diagnosis. They are interested in learning how parents/caregivers to young people at risk of youth HTN perceive it, and their experiences navigating this diagnosis.

We are inviting stakeholders with a range of expertise to join this discussion:

- Parents/caregivers to young people ages 10-17 who are at risk, or who have been recently diagnosed with high blood pressure
- Individuals working closely with young people ages 10-17 who are at risk, or who have been recently diagnosed with high blood pressure. For example:
 - medical assistants
 - social workers/ case managers
 - child-life specialists
- Health communication experts

Sessions will take place:

August 2020

For more Information on upcoming ShARPs:

Contact Josefina Serrato, josefina.serrato@northwestern.edu

To request a ShARP or learn more about other CCH consultation services, Email [click here](#) or visit [here](#)

Happy 1 Year Anniversary to ARCC Community Engagement Liaison Ariel Thomas

CCH is honored to celebrate the one year anniversary of [ARCC](#) Community Engagement Liaison Ariel Thomas! We're thankful for her commitment & dedication to Chicagoland communities & health equity. We appreciate her leadership & approach to partnership building. Cheers to the next years!



CCH Faculty Rebecca Johnson published in *Palliative and Supportive Care*

CCH faculty member [Rebecca Johnson, PhD](#), together with [Josh Hauser, MD](#) and [Linda Emanuel, MD, PhD](#) recently had an [article](#) published in [Palliative and Supportive Care \(CUP\)](#): *Toward a clinical model for patient spiritual journeys in supportive and palliative care: Testing a concept of human spirituality and associated recursive states.*

Funded by the SMART Foundation and managed by the [Health Care Chaplaincy Network](#) the project the article reports on explores human spirituality in the palliative care context and ways that multi-professional hospital care teams (inclusive of chaplains) can understand or connect with the unique experiences and feelings of patients. Jeanne Wirpsa, Spiritual Care and Education, leads an annual research literacy training day for chaplains. Non denominational by design they do an amazing job of supporting and caring for patients as well as their health professional team members.

For more articles that discuss the role of the health care hospital chaplain click [here](#) and [here](#).

The Center for Community Health is supported, in part, by the
Northwestern University Clinical and Translational Sciences Institute, Grant Number UL1TR001422 from the National Center for Advancing
Translational Sciences, Clinical and Translational Sciences Award
and the
Institute of Public Health and Medicine (IPHAM).

M Northwestern Medicine
Feinberg School of Medicine

Center for Community Health

[http://www.feinberg.northwestern.edu/sites/cch/
cch@northwestern.edu](http://www.feinberg.northwestern.edu/sites/cch/cch@northwestern.edu)

Northwestern University, Center for Community Health,
750 N. Lake Shore Drive, Suite 680, Chicago, IL 60611

[SafeUnsubscribe™](#) {recipient's email}.

[Forward this email](#) | [About our service provider](#)

Sent by cch@northwestern.edu powered by



Try email marketing for free today!