

Alliance for Research in Chicagoland Communities (ARCC)

10 years of Community-Engaged Research (CEnR) & Partnership Seed Grants

Background

ARCC Alliance for Research in Chicagoland Communities
ARCC- www.ARCCOnline.net

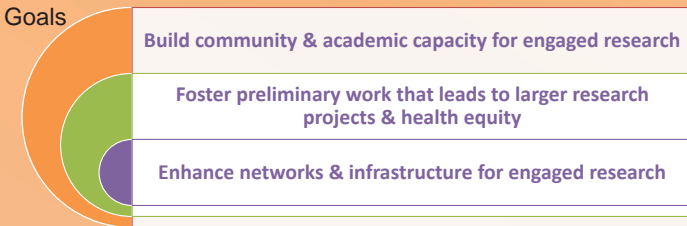
Mission: Catalyze & support meaningful community & academic engagement across research spectrum to improve health & health equity

Guided by community-academic Steering Committee
Program of Center for Community Health



Serving **NUCATS** Clinical and Translational Sciences Institute and Institute of Public Health & Medicine

Grant Program Description



- Proposals jointly submitted by community & academic partners
- Extensive assistance/review for applicants (partnership brokering, info webinar, review drafts, feedback from reviewers)
- Modified NIH review process (written & in-person) by community & academic reviewers
- Grantee requirements: mid-grant meeting, final & annual reporting
- Started in '08. Grant type/focus/amount (\$5-30K) has changed over time based on feedback from applicants, grantees, reviewers
- Criteria to align with priority areas of Chicago Dept. of Public Health & Northwestern Hospital Community Health Needs Assessment

History/Focus



Population	# (%)
Youth	17 (38%)
African American	13 (29%)
Latino	8 (18%)
Seniors	6 (13%)
Immigrant/Refugee	5 (11%)
Asian	4 (9%)
LGBT	4 (9%)
People Living with Disabilities	4 (9%)

Geographic	# (%)
Chicago- North	11 (24%)
Chicago- South	11 (24%)
Chicago- West	9 (20%)
City Wide	9 (20%)
Suburban	3 (7%)
State Wide	1 (2%)

Department	# (%)
Preventive Medicine	9 (20%)
Pediatrics	9 (20%)
Medical Social Sciences	4 (9%)
Cognitive Neurology Alzheimer's Disease Center	3 (7%)
Institute for Healthcare Studies	3 (7%)
General Internal Medicine	3 (7%)
Urology	3 (7%)
Buehler Center on Aging	2 (4%)
Obstetrics/Gynecology	2 (4%)
Other	7 (16%)

Type of Grant	%	TOTAL
27 Partnership Development	53%	\$198,432
20 Research Pilot Project	39%	\$479,330
4 Other	8%	\$18,500
51 TOTAL		\$771,187

Topic	# (%)
Mental/Behavioral Health	11 (24%)
Cancer	6 (13%)
Nutrition/Physical Activity	6 (13%)
HIV/AIDS/Sexual Health	6 (13%)
Alzheimer's	4 (9%)
Community Health Assessment	4 (9%)
Health Care Access	4 (9%)
Youth Violence Prevention	3 (7%)
Diabetes	3 (7%)
Disability	3 (7%)
Asthma	2 (4%)
Other	5 (11%)

Challenges/Next Steps

- Seeking additional ways to bridge small ARCC grants with larger external research funding
- Considering how to better align ARCC grants w/local priorities
- Support for full spectrum of translational research. E.g. Striving to engage clinical researchers in grants, as applicants
- Seeking more ways to evaluate ARCC grant outcomes (e.g. defining/tracking community impact)
- Looking for more ways to share grantee findings/lessons learned. Currently share tools on www.ARCCresources.net

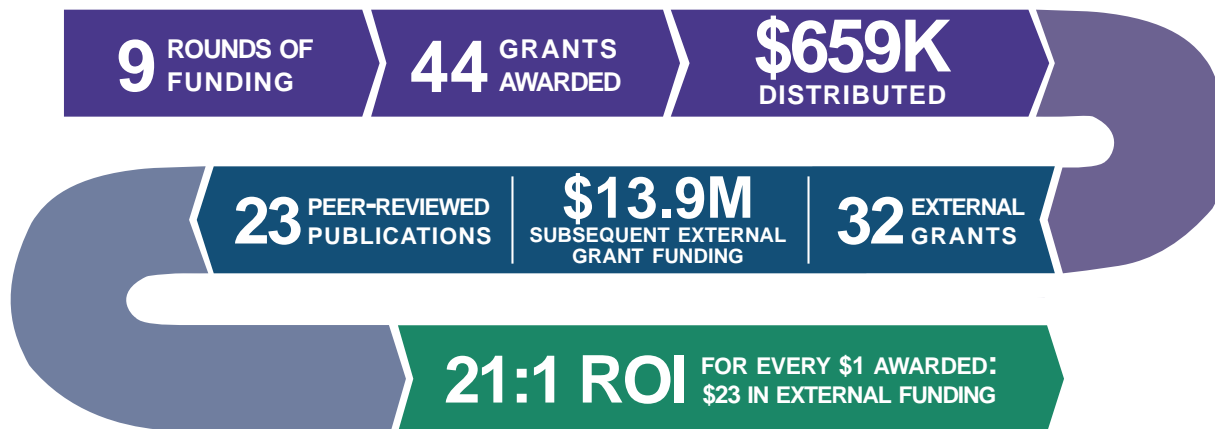
Acknowledgement: Supported by National Institutes of Health Clinical & Translational Award UL1TR000150 & Northwestern University.



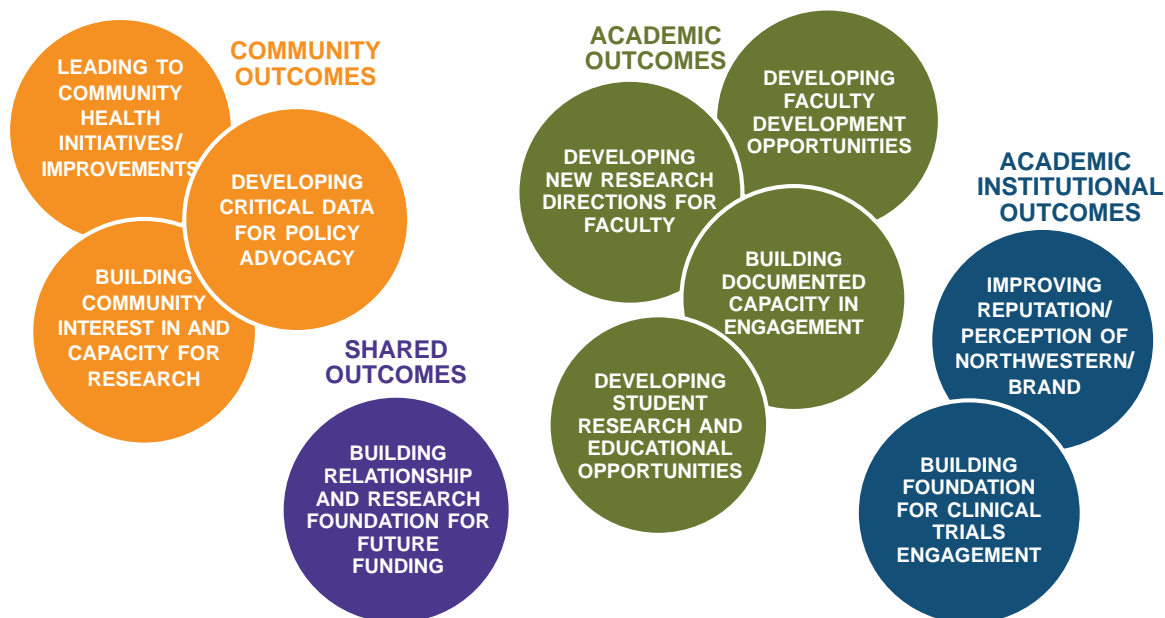
UPDATE ON IMPACT OF ARCC SEED GRANTS

TRACKING DATA FROM ROUNDS 1-9 (2008-16)

THE SEED GRANT PROGRAM SEEKS TO SUPPORT THE DEVELOPMENT OF COMMUNITY-ENGAGED RESEARCH PARTNERSHIPS AND PROJECTS BETWEEN CHICAGOLAND COMMUNITIES AND NORTHWESTERN UNIVERSITY ACADEMIC TEAMS.



DIVERSE IMPACT BEYOND GRANTS & PAPERS



FOR MORE INFORMATION, VISIT ARCCONLINE.NET

ARCC is a program of the Center for Community Health, Northwestern University Institute for Public Health & Medicine and Northwestern University Clinical & Translational Sciences Institute