



Alliance for Research in Chicagoland Communities

2021 Community-Engaged Research Seed Grants

Partnership Development Info Session



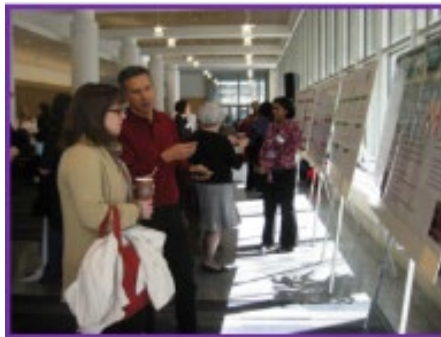
Alliance for Research in Chicagoland Communities



Celebrating 12 years of engagement and action!

Catalyze and support engaged community-academic
research partnerships to improve health & equity

www.ARCOnline.net



Northwestern University Feinberg School of Medicine

Center for
Community Health





**Ecker Center for
Behavioral Health**



**Puerto Rican
Cultural Center**



CALOR



Cambodian Association of IL



Access Living



The Night Ministry



HANA Center



CJE Senior Life



The Blue Hat Foundation



Apostolic Faith Church

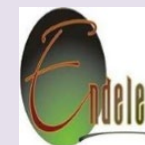


Chicago Youth Programs



Health & Medicine Policy Research Group

ARCC STEERING COMMITTEE



**Endeleo
Institute**



**Government Agencies: Chicago Department Of Public Health,
Chicago Public Schools**



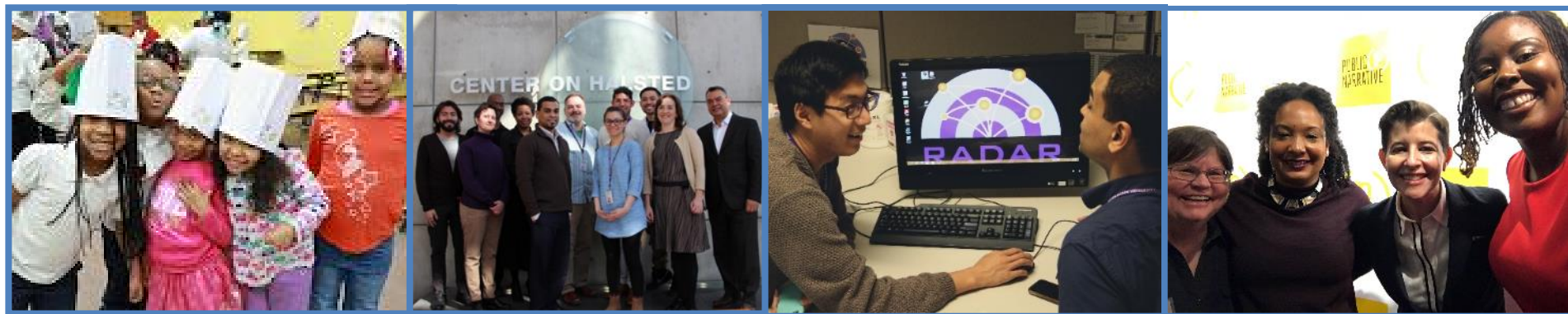
Northwestern Faculty & Academic Staff:

Tara Gill PhD, Prakash Jayabalan MD PhD, Lisa Kuhns PhD, Tarneka Manning MEd, Holly Manprizio MPH, Jen Martinez PhD, Matt O'Brien MD, Theresa Sukal-Moulton DPT PhD, Faith Summersett-Ringgold PhD, Sarah Welch MPH



Goals for the Session

- Seed Grant Program Purpose/Eligibility
- Application and Review Process
- Resources
- Q&A



Principles of Engagement



Community-Engaged Research

- Honors & centers expertise of communities (local, cultural, practice, lived experience experts) in collaboration with academics (scientific experts) to increase value of research for improving health & equity
- **Broad spectrum:** minimal to equal partnership in all aspects

ARCC 2021 Seed Grant Goals

- Support community-engaged research partnership and project development
- Lay the groundwork for the development of community-engaged research projects/proposals for external funding



2021 Seed Grants- 2 types of awards

- Partnership Development Awards
 - Up to \$5K, Up to 18 months
 - **Two cycles in 2021, 2nd due in late Spring 2021**
- Research Pilot Awards
 - Up to \$25K (max request, not per year), Up to 36 months
 - Will be due in late Spring 2021



Partnership Development Grants



- Intended to support *newly developing partnerships*
- Possible activities:
 - Relationship building, Exploring areas of shared interest/compatible skills, Engaging addtl. partners
 - Defining roles/responsibilities of partners
 - Developing partnership/engagement infrastructure/processes
 - Building capacity of community and academic partners
 - Planning future collaboration and proposals

Eligibility

- Applications must be developed & submitted jointly by a community-academic partnership (community/faith/public organization and Northwestern faculty member)
- For assistance in connecting with possible partners, contact ARCC as soon as possible



Priorities

- Focus on racial & health equity and addressing root causes
- Community leads by/for/about communities most impacted by health inequities
 - Black, Indigenous, Latinx, Arab, Asian, LGBTQ, People living with disabilities
- Community or academic lead(s) who haven't received ARCC seed grant before



Health & Racial Equity Defined

- Everyone has a fair & just opportunity to access what they need to thrive
 - Requires removing obstacles
 - Race/ethnicity/community no longer determines one's outcomes

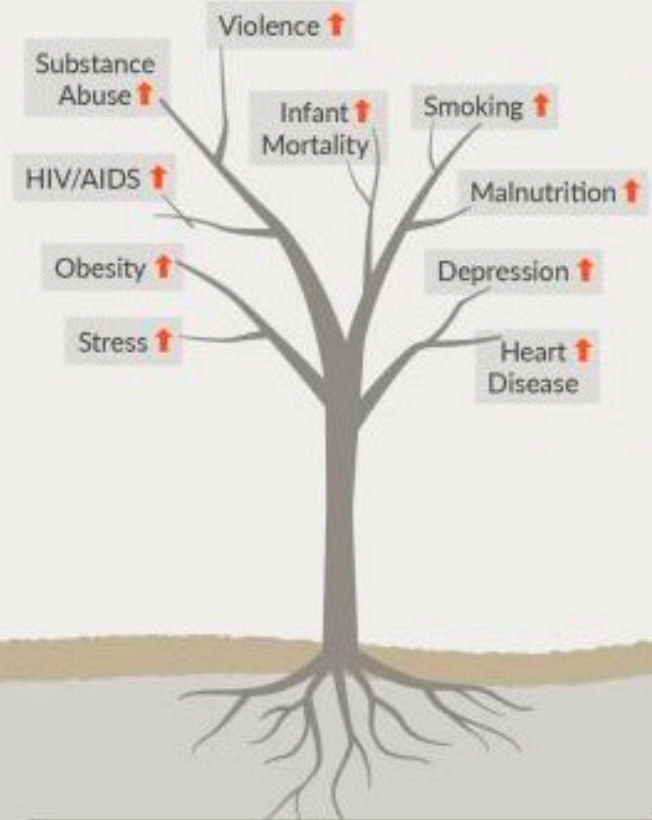


Addressing Root Causes

Community conditions can support — or create barriers to — good health.



Quality Schools, Access to Healthy Foods, Access to Healthcare, Access to Recreational Facilities, Clean Environment, Transportation Resources, Adequate Income, Health Insurance, Quality Housing, Jobs



Adverse Living Conditions, Food insecurity, No Recreational Spaces, Limited Access to Quality Care, Segregation, Poverty, Poor Quality Schools, Occupational Hazards, Environmental Toxins, Marketing for Tobacco and Alcohol, Unemployment

Local resources



[Healthy Chicago 2025](#)



[Northwestern Memorial Hospital 2019 Community Health Needs Assessment](#)



Pre-Application Call

- Before submission, **requirement** to talk with ARCC director Jen Brown to discuss fit & feasibility of potential proposal ideas.
- ***Mandatory & no later than Feb 2***
- jenbrown@northwestern.edu



Application

- Significance of partnership focus
- Description of partnership (history/capacity/roles)
- Description of grant aims & activities:
 - how grant will lead to sustained partnership, future research collaboration & funding, community impact
- Alignment with priority(ies)
- Budget & budget justification



Budget

- Must use budget form provided on ARCC website
- No required form for budget justification.
- Split budget (proportions determined by partnership):
 - \$ for academic partner/related expenses go to academic lead
 - \$ for community partner/related expenses go to community lead

Possible expenses

- partnership meetings, training
- participation of community/academic partners and/or community residents/patients/stakeholders
- project staff on grant activities (manage meetings/logistics)

Review Process

- Review by experienced community & academic partners
- Quality/feasibility/potential of proposed engagement & activities
- Alignment with priorities
 - Focus on racial equity/root causes
 - Community lead org led by & serving BIPOC & other marginalized communities
 - Haven't received ARCC seed grant before
- Applicants will receive feedback on their applications



Guidance from past grants

- Must have **research** focus- not conducting research but planning, preparing, seeking funding for research
- Clearly show community interest/involvement
- Focus on equity
- Don't have overly ambitious expectations
- Build on other support, if you have it
- Connect to future research and opportunities
- Incorporate use of ARCC/CCH resources (training, materials, services, etc.)

Timeline

- Discuss idea with ARCC Director
- Application Deadline
- Funding decisions communicated

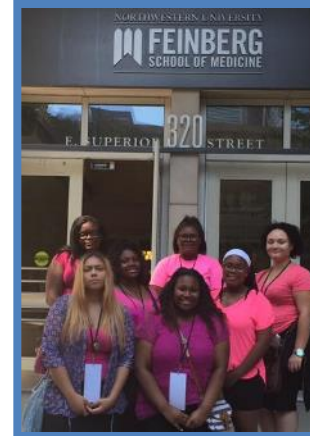


Deadlines

Now until Feb 2

Feb 16

March



Resources

- Contact ARCC/CCH staff
- Happy to give feedback on drafts received by Feb 2
- Sample full proposals
- Monthly Resources & Opportunities [listing](#)
- Online ARCC Resource Directory
www.ARCResources.net





Jen Brown: jenbrown@northwestern.edu 312-503-1942

Ariel Thomas: arielthomas@northwestern.edu 312-380-9151

<http://www.feinberg.northwestern.edu/sites/cch/>



@JenBrownARCC

