

TissueGnostics User's Guide

If you are the first user of the day:

1. Log in NU Core from your smart phone or your lab computer to click “begin the reservation”,
2. Turn on the power supply (#1),
3. Turn on microscope (#2), wait till LED (#9) is fully on, then proceeding next,
4. Turn on Andor camera (#3),
5. Turn on and logon computer (#15) User name: user, password: tg,
6. Turn on the LED lamp (X-Cite) (#11) (Only if you capture fluorescent image),
7. Login the FSMResFiles Core Server,
8. Open TissueFAXS program.

If you are not the last user of the day:

1. Lower the stage (#6) and remove slide holder and then your slides. Put the slide holder back, and center the stage,
2. Exit TissueFAXS program and log off from FSMResFiles Core Server. Turn off LED lamp (X-Cite), keep power supply and microscope on,
3. Log off computer,
4. Click “end the reservation” from relay computer.

If you are the last user of the day:

1. Lower the stage and take your sample away,
 2. Center the stage and push the light path switch slider lever (#7, 8) in,
 3. Exit TissueFAXS program,
 4. Click disconnect from FSMResFiles Core Server,
 5. Shut down computer (#15),
 6. Turn off microscope and Andor camera (#3),
 7. Turn off power supply (#1),
 8. Turn off LED lamp (X-Cite) (#11) (if you used),
 9. Put microscopy cover on,
 10. Click “end the reservation” from relay computer.
- B:** if you can't make to your session for some reasons
1. Call and email the user who is right in front of your session,
 2. Let the user know you will not come to your session,
 3. Ask the user to follow “the last user of the day” procedures.

If you are using TissueGnostics during holiday:

- If you are the only user, always follow the “the last user of the day” procedures.
- If there is another user scheduled time about 1 hour after your scheduled time, you still need to follow the “the last user of the day” procedures, unless the user informs you about his/her coming.
- If another user's scheduled time is right after your scheduled time or less 30 minutes, call or email the next user to make sure his/her coming.

Extend your scheduled time

For unforeseen circumstances in research, you may need to extend your scheduled time if there is nobody schedule right after your scheduled time or there is gap between your scheduled time and next user. You can stay as long as you need or till next user's session begin.

Cancellation Policy:

After signing scheduler online, you may simply cancel your schedule online 24 hours before your scheduled time. Any cancellation within 24 hours of your schedule time, you will be charged for \$30.

If you have any questions and concern, please contact CAM staff.

*Always check the
schedule on NU Core
at the end of your
session*

*NU policy requires no
patient's information
be used to label
clinical sample or
images that appear on
public media.*

Acknowledging the Center for Advanced Microscopy

It is important that the use of the Center for Advanced Microscopy is properly acknowledged in your publications. Acknowledgement helps us demonstrate the impact we contribute to the research community, and it helps tremendously in our efforts to secure funding to bring you more cutting edge instruments and services.

So help us help you!

Anyone who uses the facility should acknowledge the Center for Advanced Microscopy by including a "General Acknowledgment". If any specific equipment was used, they should ADD the corresponding paragraph that matches the instrument.

General acknowledgment

"Imaging work was performed at the Northwestern University Center for Advanced Microscopy generously supported by NCI CCSG P30 CA060553 awarded to the Robert H Lurie Comprehensive Cancer Center."

Andor Spinning Disk

"Spinning disk confocal microscopy was performed on an Andor XDI Revolution microscope, purchased through the support of NCRR 1S10 RR031680-01."

Nikon Multiphoton

"Multiphoton microscopy was performed on a Nikon A1R multiphoton microscope, acquired through the support of NIH 1S10OD010398-01."

Nikon N-SIM

"Structured illumination microscopy was performed on a Nikon N-SIM system, purchased through the support of NIH 1S10OD016342-01."

Zeiss PALM

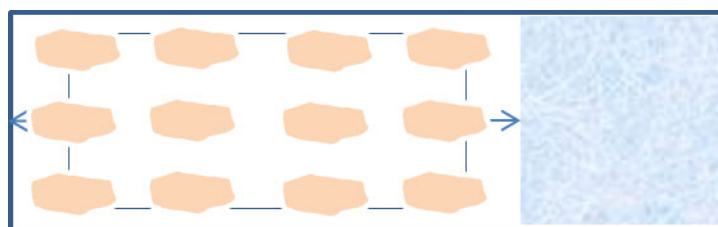
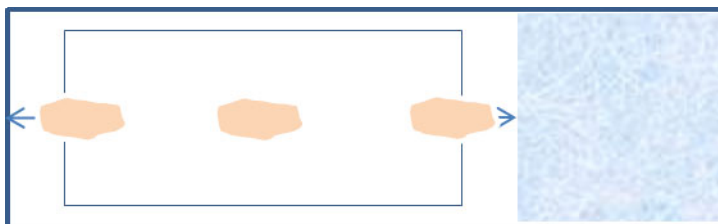
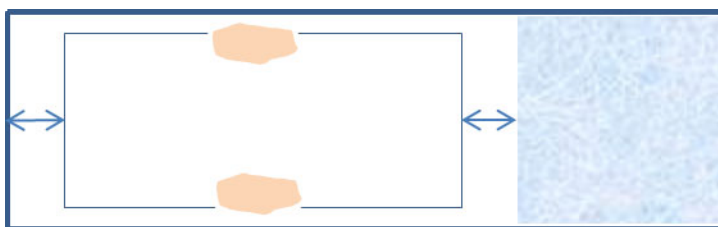
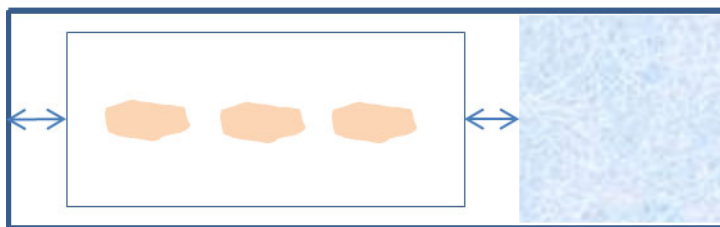
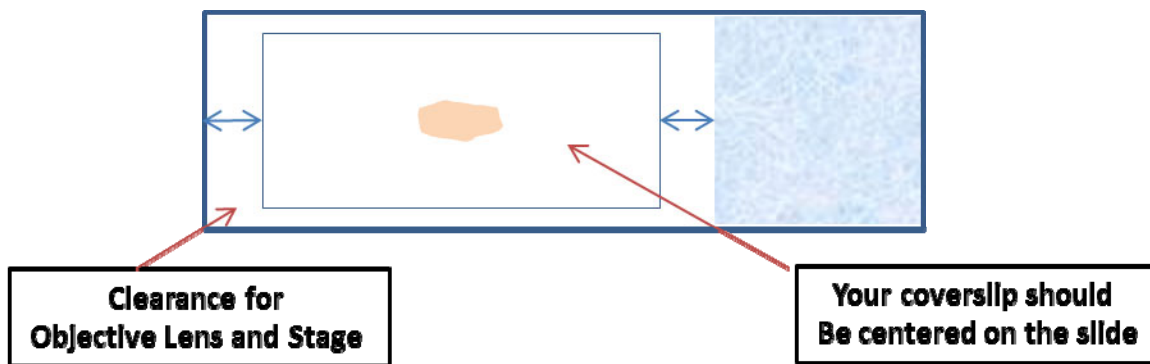
"Microdissection was performed on Zeiss PALM laser catapulting microdissection system purchased with the support of NCRR 1S10RR025624-01."

For example, if a user uses the PALM system, then the acknowledgment should read:

"Imaging work was performed at the Northwestern University Center for Advanced Microscopy generously supported by CCSG P30 CA060553 awarded to the Robert H Lurie Comprehensive Cancer Center. Microdissection was performed on Zeiss PALM microdissection system purchased with the support of NCRR 1S10RR025624-01."

Users should also send a PDF copy of the papers they publish to Constadina Arvanitis.

Mount Sample for Imaging at CAM



ALSO PLEASE REMEMBER:

If you want to Image with 40x or higher do not grow your cells on chambered slides!!!!

TissueGnostics Setting

