



**McGaw** Medical Center  
of Northwestern University



**2022-23**  
**Residency & Fellowship Programs**



---

## Graduate Medical Education

The McGaw Medical Center of Northwestern University, established in 1966, is an Illinois not-for-profit corporation through which Northwestern University and its major clinical teaching affiliates sponsor graduate medical education. This integrated organization affirms an institution-wide commitment to excellence in graduate medical education and permits seamless coordination of rotations for residents and fellows.

McGaw's member institutions and affiliates include top-ranked urban, suburban, specialized and general hospitals such as our *U.S. News & World Report* Honor Roll-recognized partners Northwestern Memorial Hospital, Ann & Robert H. Lurie Children's Hospital of Chicago, and the Shirley Ryan AbilityLab. Jesse Brown VA Medical Center is also an integral part of McGaw through its longstanding affiliation with the medical school. Northwestern Medicine Lake Forest and Delnor Hospitals hold affiliate member status within McGaw and several other institutions, including the Cook County Bureau of Health Services/John H. Stroger, Jr. Hospital of Cook County, Erie Family Health Center, Swedish American Hospital and Methodist Hospitals (Indiana) are also associated through one or more of our graduate medical education programs.

These hospitals represent a wide range of teaching environments. This diversity allows trainees to experience medicine in its many settings, from large tertiary-care academic centers to community hospitals and health centers. The seamless integration enables:

---

The provision of a supportive educational environment based upon sound educational principles, emphasizing the highest ethical and professional standards and providing opportunity for scholarly endeavor

---

The routine assessment of program quality and provision for ongoing quality improvement

---

The obligation of sufficient personnel and financial resources to support these efforts

---

The active process of diversity initiatives and faculty development

---

We are proud of our uniquely integrated system and the excellent programs we offer. We hope you will consider joining McGaw for the next phase of your medical training.



**JOSHUA GOLDSTEIN, MD**

Designated Institutional Official,  
McGaw Medical Center of Northwestern University  
Senior Associate Dean for Graduate Medical Education  
Northwestern University Feinberg School of Medicine  
Chicago, IL



---

## Perspectives



I have enjoyed the balanced clinical perspectives of training at both Northwestern Memorial Hospital and the Jesse Brown VA Medical Center in Chicago. Our experiences range from being involved in cutting edge research and clinical trials to advocating for underserved patients. This environment creates well-rounded physicians who can see the full spectrum of both individual patient and healthcare system needs.

---

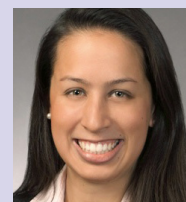
**WADE T. IAMs, MD, '18 GME**  
Medical Oncology Fellowship Program



I chose Northwestern after having the opportunity to rotate here as a fourth year medical student. I felt that their strong tradition of surgical excellence, high quality facilities, commitment to research, and high expectations from their trainees would arm me moving forward with the best surgical training available. Also, I was welcomed by the faculty and housestaff to their family and have really come to enjoy living in Chicago as well!

---

**COURTNEY L. FURLOUGH, MD, '22 GME**  
Vascular Surgery Residency Program



From the opportunity to live in Chicago to receiving world-class training and mentorship, McGaw was an easy choice. From day one, you join an environment focused on education, wellness, and providing the tools to succeed. Residency is an incredible time where you grow both clinically and professionally—I'm thankful to McGaw for the opportunity to take advantage of it all.

---

**SARAH SANDERS DHAKE, MD, '19 GME**  
Emergency Medicine Program



# 1 McGaw Medical Center of Northwestern University



## WORLD-CLASS TRAINING

Located in Chicago along the shores of Lake Michigan, the McGaw Medical Center of Northwestern University is one of the largest graduate medical education institutions in the country. A consortium of world-class clinical affiliates, together with Northwestern University Feinberg School of Medicine, McGaw provides advanced healthcare to the communities and patients it serves in a variety of diverse settings.

The McGaw Graduate Medical Education Office provides training to more than 1,200 residents and fellows enrolled in more than 180 ACGME-accredited and non-ACGME accredited programs. In addition to its training and patient care missions, McGaw's steadfast commitment to innovation and scientific research on the academic medical campus is evident in Feinberg's top rankings for NIH funding, breakthrough discoveries and the development of the Louis A. Simpson and Kimberly K. Querrey Biomedical Research Center on the downtown campus.

The Northwestern Simulation network coordinates and PROMOTES COLLABORATION among McGaw Medical Center members to provide a COHESIVE APPROACH to simulation.

## DYNAMIC ACADEMIC PROGRAMS

The McGaw Medical Center offers integrated graduate medical education programs to medical school graduates interested in further training at an academic medical center. More than 100 fully accredited residency and fellowship programs are available in surgical and medical specialties.

The combined resources available to residents and fellows are varied and extensive. Feinberg enjoys an outstanding reputation for teaching and research. The hospitals of the McGaw Medical Center are recognized for excellence in patient care. Residents and fellows have access to a variety of hospitals — public, private, general, specialty and community. They gain ambulatory care experience at the Northwestern Medicine Ambulatory Care Center, hospital outpatient services, community clinics and special diagnostic facilities.

Feinberg and many of the McGaw Medical Center hospitals offer the latest technologies and high-fidelity simulation tools, ranging from patient simulators for hands-on care to virtual reality programs that introduce and help hone minimally invasive surgical skills. The Northwestern Simulation network coordinates and promotes collaboration among McGaw Medical Center members to provide a cohesive approach to simulation. Clinical researchers and educators from Feinberg have also led the charge in demonstrating that simulation-based training not only improves the diagnostic and procedural skills of students, residents and fellows, but also enhances patient care. Faculty members have published studies and received national recognition for their efforts in this exciting and growing area of medical education.

## FELLOWSHIP TRAINEES ARE VITAL

Great academic medical centers are distinguished by high-quality fellows who conduct high-impact research and deliver exceptional care with the dedicated supervision of faculty. As fellows seek continued training across a range of subspecialty fields such as cardiology, neurocritical care, pediatrics, oncology, gastroenterology, and rheumatology, they serve as integral members of patient care teams and enrich the academic environments with novel ideas and research approaches. They fuel excellence in patient care education and research as well as the reputation of an institution.

Northwestern's highly competitive fellowship programs, which reflect the full spectrum of medical and surgical disciplines, are designed to provide physicians who have completed residencies with the opportunity to evolve into superb clinicians and surgeons, committed educators and skilled researchers. There are nearly 400 fellows training in various programs that range from one to three years in duration, depending on the requirements for certification in the subspecialty and the availability of research opportunities.

Over the course of their training, fellows are supervised and mentored by senior faculty members across the various settings, including Northwestern Memorial Hospital, Ann & Robert H. Lurie Children's Hospital of Chicago, Shirley Ryan AbilityLab, Northwestern Medicine clinics, other outpatient offices, and Feinberg School of Medicine research laboratories.

## 2 The Clinical Experience



### Primary Clinical Affiliates

Northwestern Memorial Hospital  
Ann & Robert H. Lurie Children's  
Hospital of Chicago  
Shirley Ryan AbilityLab  
Jesse Brown VA Medical Center

### Other Clinical Affiliates

Cook County Bureau of Health Services/  
John H. Stroger, Jr. Hospital of Cook County  
Erie Family Health Center  
Methodist Hospital (Gary, Ind.)  
Northwestern Medicine Central DuPage  
Hospital  
Northwestern Medicine Delnor Hospital  
Northwestern Medicine Lake Forest Hospital  
Swedish Covenant Hospital

### THE CLINICAL EXPERIENCE

It would be difficult to create a medical center more effectively balanced than the McGaw Medical Center of Northwestern University. Few other medical organizations have such assets: singular hospitals; component institutions readily accessible from all parts of the city; and staffing by many nationally prominent physicians who consider teaching health workers, medical students, resident physicians and their colleagues a primary goal.

Although each hospital functions independently, it joins with other medical center members in support of graduate medical education. These hospitals provide ambulatory care services as well as indigent care clinics. They also offer residents and fellows additional outlets to experience and hone their ambulatory care skills as well as help expand healthcare access to the underserved.

### OUR HISTORY

When the medical school at Northwestern opened in 1859, it absorbed the Chicago City Dispensary, a charitable outpatient service organized and administered by Drs. Edmund Andrews, John H. Hollister, and Horace Wardner, members of the original faculty. Incorporated in 1873, the outpatient department became the Davis Free Dispensary. Two years later it was designated the South Side Dispensary, providing charitable care to Chicago residents. In 1893, the dispensary's endowment funds were used to construct Davis Hall, a clinical facility on Dearborn Street, and the trustees surrendered ownership to the medical school.

McGaw supports a broad range of **RESIDENCY AND FELLOWSHIP PROGRAMS** that build important clinical skills and produce graduates who are prepared.

Outpatient service continued until the medical school moved from Dearborn Street to the Ward Building in 1926; becoming Montgomery Ward Clinics. In 1943, the Louis E. Schmidt Clinic for treatment of venereal disease was added, and the facilities were renamed Northwestern University Medical Clinics.

In 1972, the University founded Northwestern University Medical Associates (NUMA), a faculty group practice, to replace the Montgomery Ward Clinics. Through NUMA the medical school established a private healthcare facility that also offered an ideal teaching environment for students and residents.

In 1982, the Northwestern Medical Faculty Foundation (NMFF) replaced NUMA; in 2013 NMFF, which had become one of the nation's largest multispecialty groups, joined with the Northwestern Memorial Physician Group to become Northwestern Medical Group (NMG). Together, the combined physician members, which support the Dean's Research and Education Fund at Northwestern University Feinberg School of Medicine, teach and mentor medical students, residents and fellows. Teaching and research occur in conjunction with patient care in the Northwestern Medicine Ambulatory Care Center. This exposure to a clinical facility, based on private practice yet dedicated to education, gives Northwestern trainees a breadth of experience.

---

## Northwestern Memorial Hospital

Northwestern Memorial Hospital is recognized as the No.1 hospital in Illinois and is among among the top hospitals in the country, ranking No. 9 on the “America’s Best Hospitals” Honor Roll by U.S. News & World Report.

Northwestern Memorial Hospital is one of the nation’s premier academic medical center hospitals and the primary teaching affiliate of the McGaw Medical Center of Northwestern University, with department chairs and division chiefs the same for both the hospital and Northwestern University Feinberg School of Medicine.

The hospital anchors the Northwestern Medicine health system, which provides care through 11 hospitals and more than 200 ambulatory care locations across Chicago and its northern and western suburbs. Four of Northwestern Medicine hospitals have earned Magnet status, the gold standard for nursing excellence and quality care.

Residency program opportunities continue to increase throughout the growing health system. Thoracic surgery residents have begun training at Northwestern Medicine Central DuPage Hospital in Winfield, while the Northwestern McGaw Family Medicine Residency Programs at Lake Forest and Delnor offer community healthcare experiences, including rotations through Northwestern Medicine Lake Forest Hospital, Northwestern Medicine Grayslake Outpatient Center and the Erie HealthReach Center in Waukegan.

With a longstanding commitment to improving the health of the community, Northwestern Memorial partners with neighborhood health centers and invests in programs that expand access to quality care in the community.



---

## Ann & Robert H. Lurie Children's Hospital of Chicago

Ann & Robert H. Lurie Children's Hospital of Chicago is ranked as the top children's hospital in Illinois by *U.S. News & World Report*.

One of the top pediatric hospitals in the nation, Lurie Children's provides the highest quality, family-centered care to children. Lurie Children's is the largest pediatric specialty provider in the region, providing care for over 220,000 children, annually. The medical staff includes more than 1,800 physicians and allied health professionals in 70 pediatric specialties.

Lurie Children's mission is to enhance the health and well-being of children through patient care, research, education and advocacy. Support from donors, government and community leaders, businesses, and child advocacy partners is essential to its mission.

The Stanley Manne Children's Research Institute, the research arm of Lurie Children's, is the academic and research partner of Northwestern University Feinberg School of Medicine, advancing children's health by generating new knowledge about the prevention and treatment of disease. With the highest level of ethical standards in research, the Manne Research Institute works with scientists from around the world to improve pediatric care and enhance the health and well-being of children. Its laboratory-based research uncovers fundamental knowledge about health and disease, including medical conditions, human development and genetics.



---

## Shirley Ryan AbilityLab

The Shirley Ryan AbilityLab's research enterprise is the largest of its kind and renowned for breakthroughs in biomedical, neural, mechanical and electrical engineering; molecular/cellular biology; robotics and pharmacotherapeutics.

The Shirley Ryan AbilityLab, formerly the Rehabilitation Institute of Chicago (RIC), is the global leader in physical medicine and rehabilitation for adults and children with the most severe, complex conditions — from traumatic brain and spinal cord injury to stroke, amputation and cancer-related impairment. The Shirley Ryan AbilityLab expands and accelerates leadership in the field that began at RIC in 1953 — its care and research designated the “No. 1 Rehabilitation Hospital in America” by *U.S. News & World Report* every year since 1991.

Upon opening in March 2017, the \$550 million, 1.2-million-square-foot Shirley Ryan AbilityLab became the first-ever “translational” research hospital in which clinicians, scientists, innovators and technologists work together in the same space, surrounding patients, discovering new approaches and applying (or “translating”) research in real time. Applied research focuses particularly in the areas of neuroscience, bionic medicine, musculoskeletal medicine and technology transfer.





---

## Jesse Brown VA Medical Center and Clinics

The Jesse Brown VA Medical Center provides care to approximately 49,000 veterans who reside in the City of Chicago and Cook County, Ill., and in six counties in northwestern Indiana.

The Jesse Brown VA Medical Center consists of a 220-bed acute care facility and four community-based outpatient clinics. These facilities are affiliated with Northwestern University Feinberg School of Medicine and the College of Medicine of the University of Illinois at Chicago.

In FY 2018, the medical center had more than 7,800 inpatient admissions and 629,000 outpatient visits. A budget of over \$475 million supports approximately 2,400 full-time equivalent staff, including more than 200 physicians and 530 nurses, with more than 500 volunteers providing service and care at Jesse Brown VA Medical Center sites.



### 3 Diversity and Inclusion



#### STRENGTH IN DIVERSITY

The McGaw Medical Center of Northwestern University and the Feinberg School of Medicine are committed to building a diverse faculty, workforce, trainee and student community. Northwestern embraces all types of diversity as strengths and strives to create a medical campus environment of belonging and inclusion for all.

The Northwestern McGaw Underrepresented Residents and Fellows Forum (NMURFF) is an inter-departmental group for trainees at McGaw Medical Center that focuses on diversity and representation.

The Chicago campus is also home to the Northwestern Chicago OUT Network, a campus- and affiliate-wide networking group for LGBTQ+ faculty, staff, students, residents and fellows.

The Feinberg School of Medicine also offers Safe Space Training for faculty, staff, students and residents to better educate them about LGBTQ+ sensitivities and issues, especially in the healthcare arena.

The Student to Resident Institutional Vehicle for Excellence (STRIVE) mentoring program, founded by a McGaw resident, supports underrepresented minority medical students by providing a safe space for learning, mentorship and collegiality with residents and fellows.

Visit us at [mcgaw.northwestern.edu/diversity](https://mcgaw.northwestern.edu/diversity)



I chose Northwestern because of their beautiful facilities, research opportunities, and their commitment to diversity through the Northwestern McGaw Underrepresented Residents and Fellows Forum. My radiology training was excellent and has allowed me to succeed in a very competitive market. My experience at Northwestern was phenomenal!

**JOSEPH GRAVES, MD, '16 GME**  
Diagnostic Radiology  
Residency Program

#### NORTHWESTERN ACTIVISM

Each summer, Northwestern University participates in Chicago's annual Pride Parade in support of the LGBTQ+ community.

In June 2020, Northwestern healthcare providers knelt in unison to protest the killing of George Floyd and centuries of racism in America during the "White Coats for Black Lives" demonstration.

In May 2021, McGaw hosted the first annual Health Equity Week, a series of panel discussions highlighting the roots of healthcare disparities and how clinicians and scientists are working to find solutions. Offering another ambitious series of carefully curated sessions in 2022, increased engagement demonstrates enduring community-wide interest and commitment.



I chose to train at Northwestern because of its well-known reputation for cancer care and research, commitment to diversity and all those with whom I would have an opportunity to work. Northwestern has been extremely supportive of my leadership as President of Northwestern McGaw Underrepresented Residents and Fellows Forum (NMURFF) which has allowed me to pursue my passion of promoting, increasing and retaining diversity in medicine.

**JENNIFER J. PARKER, MD, PHD, '18 GME**  
Radiation Oncology Residency Program



Resident and Fellow engagement is highly valued at McGaw and opportunities for involvement across the medical center are abundant. McGaw is a great fit for those seeking clinical training and leadership opportunities at an urban, academic medical center. Additionally, Chicago offers the amenities of a major metropolis while remaining more affordable than many comparable cities, resulting in a higher standard of living.

**ADNAN HUSSAIN, MD, '17 GME**  
Emergency Medicine Residency Program



As a leading U.S. academic medical center, Northwestern must be outstanding in all dimensions of contemporary medical science, healthcare and health policy. We understand that a major defining characteristic of leading academic medical centers is a strong and palpable presence of diversity.

**CLYDE W. YANCY, MD, MSC**  
 Vice Dean for Diversity and Inclusion  
 Chief of Cardiology in the Department of Medicine Magerstadt Professor  
 Professor of Medicine (Cardiology) and Medical Social Sciences



A culturally competent training environment promotes excellence, improves health outcomes and patient care quality, and will eventually eliminate health disparities.

**LINDA SULEIMAN, MD**  
 Assistant Professor of Orthopaedic Surgery  
 Assistant Dean of Medical Education  
 Director of McGaw Diversity & Inclusion

## Our community affiliates help diversify and enhance the educational experience for McGaw residents with respect to serving uninsured and underinsured patients.

These include John H. Stroger, Jr. Hospital of Cook County, where McGaw has trainees in obstetrics and gynecology, urology, neurosurgery, ENT and orthopaedics. Stroger Hospital is the primary public provider of comprehensive medical services for the people of metropolitan Chicago. In 2009, it began playing a key role in obstetrics and gynecology resident training when an integrated program, now the second largest obstetrics and gynecology residency program in the country, was created with Prentice Women's Hospital.

Residents at the Family Medicine Residency Program at Northwestern Medicine Lake Forest Hospital in Lake County also train at Northwestern Medical Group in Grayslake, Ill, and Erie HealthReach Waukegan Health Center, a state-of-the-art Federally Qualified Health Center in Waukegan, Ill. In addition, McGaw family medicine residents train at Northwestern Memorial Hospital and Ann & Robert H. Lurie Children's Hospital of Chicago. Our mission is to train family physicians with an emphasis on caring for the underserved, conducting research and influencing public policy. In addition, trainees in a number of residency programs (ophthalmology, pediatrics, internal medicine and family medicine, to name a few) also have opportunities to gain extensive experience through global health rotations in remote places, where the needs are great.



### ADDRESSING BIAS IN MEDICAL EDUCATION

As part of Northwestern's efforts to improve the medical school's inclusive learning environment, the Task Force on Inclusion and Bias was formed in 2019 to ensure an inclusive curriculum that mitigates bias and promotes health equity for all persons. In 2021, McGaw launched a suite of Health Disparities and Health Equity curricula for trainees and programs.

## 4 Our Community



### WHY CHICAGO?

Chicago is a city of many neighborhoods and lifestyles. The Feinberg School of Medicine and on-campus hospitals are located in the vibrant Streeterville community, with its mix of commercial and residential buildings. Just a few blocks away, there is shopping on Michigan Avenue's "Magnificent Mile," as well as several beautiful parks for recreation and exciting nightlife in the many restaurants, bars and clubs.

The CHICAGO PARK DISTRICT is the largest municipal park manager in the nation, owning more than 8,800 acres of green space.

The McGaw Medical Center of Northwestern University is located in a city with a population of some 9.5 million in the metropolitan area. Chicago is the cultural, industrial, commercial and entertainment center of the Midwest.

The city's nationally known museums draw millions of visitors each year. Those who enjoy the performing arts have many options, including the world-renowned Chicago Symphony Orchestra and the Lyric Opera of Chicago, dance troupes in many genres, and nationally recognized theater groups.



In addition, universities and colleges in the area stimulate cultural creativity and appreciation with numerous arts-related events. Professional sports teams as well as countless collegiate and club sporting events attract thousands of enthusiastic spectators. Many city and suburban

parks provide year-round outdoor recreation. For relaxation, entertainment and sheer enjoyment, the area provides a range of extraordinary opportunities.

When residents and fellows are enrolled in McGaw's graduate medical education programs, they become part of the Northwestern community. The University was chartered as an independent institution of higher education in 1851, and its growth has paralleled the dynamic rise of Chicago, the metropolitan focus of the old Northwest Territory.

Today Northwestern is a major teaching and research university with lakefront campuses in Chicago and Evanston. The Feinberg School is on the 20-acre Chicago campus, with the 240-acre Evanston campus situated approximately 12 miles away in the first community north of the city. Graduate medical education trainees may participate in the rich intellectual and recreational life of the Evanston campus. The libraries, lecture series, theatrical productions, musical and dance performances, art exhibits, films, Big Ten intercollegiate sports events and myriad other opportunities are easily accessible from the various McGaw Medical Center hospitals.



---

## Helpful Websites

### ACADEMICS

---

Ann & Robert H. Lurie  
Children's Hospital of Chicago  
[www.luriechildrens.org](http://www.luriechildrens.org)

---

Feinberg School of Medicine  
[www.feinberg.northwestern.edu](http://www.feinberg.northwestern.edu)

---

Jesse Brown VA Medical Center  
[www.chicago.va.gov](http://www.chicago.va.gov)

---

McGaw Medical Center of  
Northwestern University  
[www.mcgaw.northwestern.edu](http://www.mcgaw.northwestern.edu)

---

Northwestern University  
[www.northwestern.edu](http://www.northwestern.edu)

---

Shirley Ryan AbilityLab  
[www.sralab.org](http://www.sralab.org)

---

### RECREATION

---

[www.cityofchicago.org](http://www.cityofchicago.org)

---

[www.chicagoreader.com](http://www.chicagoreader.com)

---

[www.suntimes.com](http://www.suntimes.com)

---

[www.timeout.com/chicago](http://www.timeout.com/chicago)

---

[www.chicagotribune.com](http://www.chicagotribune.com)

---

### CONNECT WITH US

---

McGaw Medical Center Twitter  
[@McGawGME](https://twitter.com/McGawGME)

---

McGaw Housestaff Association  
Twitter: [@HSAMcGaw](https://twitter.com/HSAMcGaw)  
Instagram: [@mcgawhsa](https://www.instagram.com/mcgawhsa)

---

Northwestern University reserves the right to change without notice any statement in this booklet concerning, but not limited to, rules, policies, tuition, fees, curricula, and courses. It is the policy of Northwestern University not to discriminate against any individual on the basis of race, color, religion, national origin, sex, sexual orientation, marital status, age, handicap, or veteran status in matters of admissions, employment, housing or services or in the educational programs or activities it operates, in accordance with civil rights legislation and University commitment. Any alleged violations of this policy or questions regarding the law with respect to nondiscrimination should be directed to Director of Equal Employment Opportunity, Affirmative Action, and Disability Services, 720 University Place, Evanston, Illinois 60208-1147, phone 847/491-7458; Office of the Provost, Rebecca Crown Center, 633 Clark Street, Evanston, Illinois 60208-1101.