

TRANSLATIONAL BRIDGE PROGRAM FUND

Fostering Translational Collaborations between Basic Scientists and Clinicians

At the Robert H. Lurie Comprehensive Cancer Center of Northwestern University, we recognize that breakthroughs in oncology most often come from the laboratories of superb basic scientists and their high-impact research efforts. We are launching the **Bridge Program** to blaze a new path not only for oncology, but for all fields in medicine that are strengthened by the collaboration and interplay between the basic sciences and clinical medicine. We are seeking philanthropic support to create a dedicated Bridge Program Fund that will enable the Lurie Cancer Center to establish and build this program.

The Bridge Program will support the creation of interdisciplinary research teams and their ability to join forces, empowering investigators to address the most urgent questions in the fields of cancer biology and oncology in daring and innovative ways. Through the Bridge Program, we have an opportunity to accelerate the progress and heighten the impact of translational research by focusing on deep and rigorous basic science concepts.

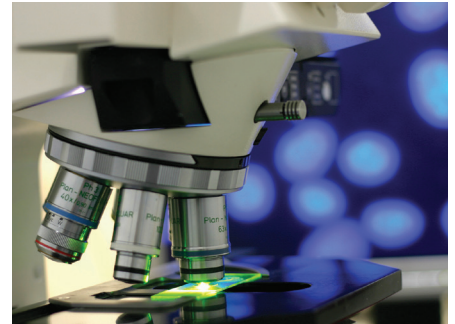
With generous philanthropic support, we will provide funding for research fellows to pursue novel research in superb basic science laboratories on Northwestern's Evanston and Chicago campuses. These fellowship trainees will benefit from mentorship by the laboratory's principal investigator, as well as the oversight of a clinician-investigator active in the patient care setting. This dual supervision will be a requirement for the continuous funding of the research fellows, and will result in the formation of powerful translational teams involving an outstanding research scientist, a practicing clinician, and the Bridge Fellow.



This link to clinical care is very powerful. It is a reality that basic scientists and clinicians seek breakthroughs to improve the options and care of patients with cancer, but these experts often do not speak the same language. Through close collaboration with both supervising faculty members, the Lurie Cancer Center Bridge Fellow will serve as a conduit to exceptional translational research, providing extraordinary opportunities for interaction and coordination. No other program of this kind exists across academic centers nationally.

The Lurie Cancer Center is excited to be setting a new precedent for other institutions to model and emulate—for the benefit of patients and their families—and for the advancement of medical education and training. The Bridge Program represents a fresh approach to training a new generation of translational cancer researchers, with the potential to raise the bar for translational science and medical education.

Upon its successful implementation, the Lurie Cancer Center will present the Bridge Program's concept for consideration to the National Cancer Institute (NCI) as the basis for developing a formal NCI grant program to support this new approach to translational research training.



"The Lurie Cancer Center's Bridge Program has the potential to change the face of cancer treatment and training in the US."

Leonidas Platanias, MD, PhD, Director of the Robert H. Lurie Comprehensive Cancer Center of Northwestern University and Jesse, Sara, Andrew, Abigail, Benjamin and Elizabeth Lurie Professor of Oncology



Learn more about the Lurie Cancer Center's patient care, services and programs, research and education, clinical trials, and faculty at cancer.northwestern.edu.

